

bilz

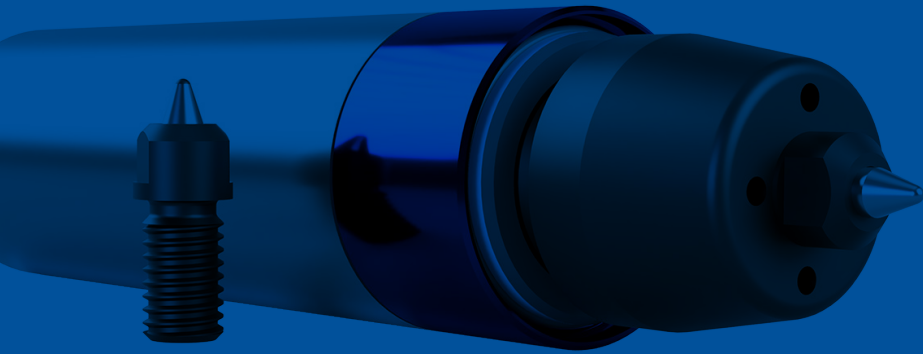
THE NEW

ENGRAVING CHUCK

Engraving on almost all surfaces



Installation on
any machine interface



Rolling generates less lateral forces meaning that the bearing load on your machine is considerably reduced.

Examples:



Plastic



Aluminum

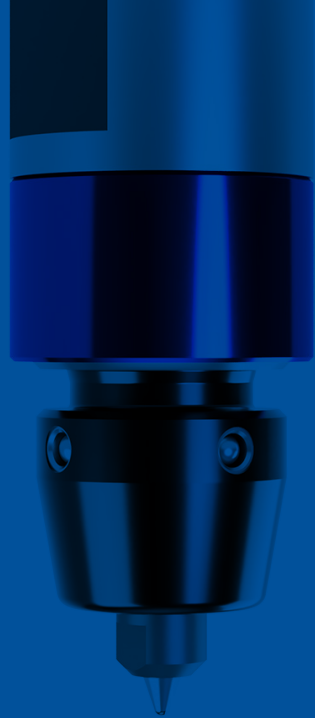


Steel



Features of our engraving chuck

- Engraving on almost any surface and various materials such as plastic / aluminum / steel (max. 57 HRC)
- Adjustable engraving hardness (engraving depth)
- Adjustment of the preset (max. 5 mm) by adjusting the setting screw
- Cleaning of the work piece surface by internal compressed air flow – not coolant cleaning
- Tool holder Ø 20 mm collet/Weldon holder
- Despite the compact design, it is suitable for many different applications
- High wear resistance of the engraving point due to rolling ball
- Cost efficient replacement purchase of the engraving point
- Simple and quick change of the engraving point
- Levelling of any unevenness



For almost any material
plastic, aluminum
or hardened steel
(max. 57 HRC)

Advantages

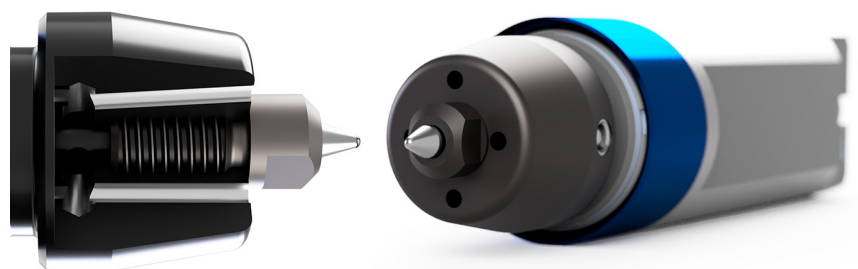
- Compressed air channels with different angle settings
- Adjustable engraving hardness (engraving depth)
- Rolling generates lower lateral forces
- Font width is adjusted (to a certain extent) by the pressing force, not by different points
- Compact design
- Simple and quick change of the engraving point
- Tool holder Ø 20 mm collet/Weldon holders

Benefits

- Cleaning of the work piece
- Engraving on almost any surface, on different materials - plastic / aluminum / steel (max. 57 HRC)
- Small bearing load on the machine – longer life
- Various font depths possible
- Covers almost any task
- Quick tool change
- Installation on any machine interface

Cleaning with compressed air

Due to the specifically targetted compressed air channels around the engraving point, our engraving chuck achieves excellent cleaning results – even with fine chips.



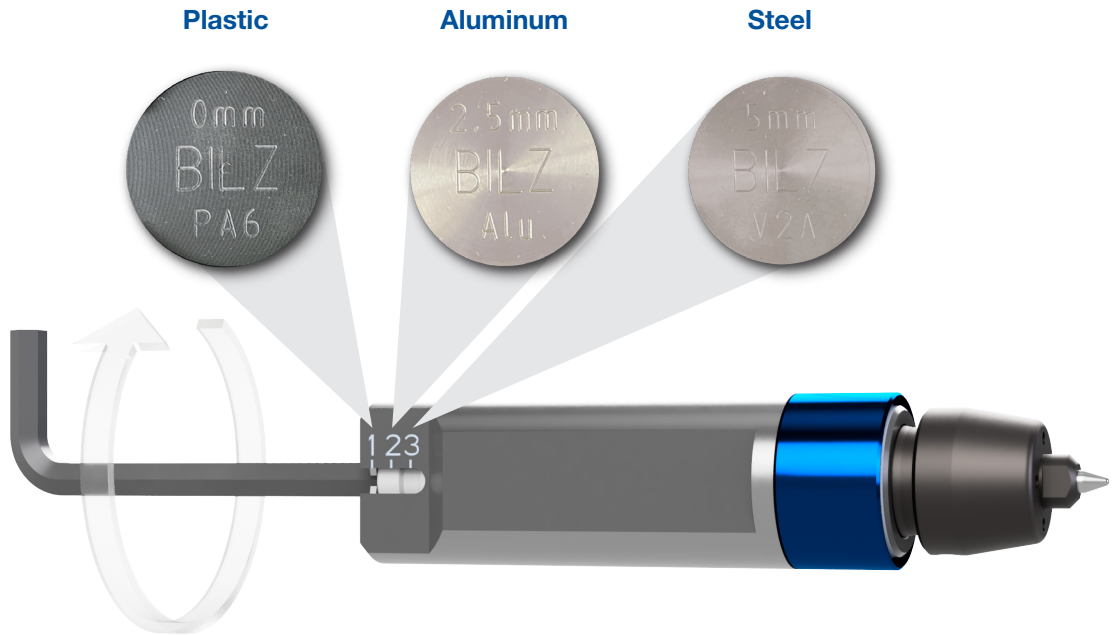
- Long life
- No damage or weakening of the surface
- No burr formation
- Marking of sandblasted surfaces with a hardness of up to 57 HRC possible
- Quick and silent engraving during the production process
- Can be changed like a normal tool
- For all standard holders and materials

ET0



Our offer to you consists of the ET0 engraving tool and the engraving point.

ET0	Description	Ident No.	Design
Gravierwerkzeug	ET0-36-K1-Z2000	5175473	
Engraving tip set 3 piece	ET0-M5-4B-S	5205269	



Adjustment and Forces

Material	Presetting	Infeed	Engraving force
Plastic	0 mm	1,0 mm	~ 50 N
Aluminum	2,5 mm	1,0 mm	~ 80 N
Steel max. 57 HRC	5,0 mm	1,0 mm	~ 110 N

